



Wavelet in blue by Annette Preen, Honours, 2nd Open Print 2009

National Convention, ‘Whanganui in the RAW’

The PSNZ's annual Convention is customarily held in April and is open to all. (Individual members of PSNZ receive significant discounts.) It is held alternately in the North and South Islands, two years in the North then one in the South.

This year's convention was billed as "a celebration of the raw natural beauty of our region and our river, the raw talent of photographers amongst us and the raw energy that is produced by a magnificent convention". This seems immodest but the Whanganui Camera Club certainly delivered and even added a bonus "raw" theme by including workshops on RAW photo capture!

As always there were inspiring speakers, helpful workshops, good field trips, plenty of talk and opportunities for fellowship. This year's speakers included lively Australians Trent Parke, Magnum photographer, and Narelle Autio, who are photographic artists in the widest sense with many books and exhibitions to their credit.

Another Aussie, Steve McAlpine entertained and informed on his speciality of wedding photography and general people skills. Successful New Zealand photographer, publisher and conservationist Craig Potton inspired. Barbara Mullins treated us to some variously hilarious, beautiful,

upComing...

May, fires at night, nice crisp mornings. Get out there and photograph! These CPS events happen this month:

- | | |
|--------------|---|
| Wed 6th May | 7:15pm Workshop – Landscape with Phil Shroeder
◆ 8:00pm 1st NH Prints Competition judged by Derek Hughes & Consultation members evening
◆ Set Subject hand in |
| Wed 13th May | 1st NH PI Competition judged by Geoff Beals |
| Wed 20th May | 8:00pm 3rd PI competition – judged by Dianne Calvert FPSNZ
◆ PI4 hand in |
| Wed 27th May | 7:15pm Workshop follow up – Colour Mgmt with Dave Slaten
◆ 8:00pm 3rd Open Print Competition – judged by Terry McGuire ESFIAP ◆ PR4 hand in |
| Wed 3rd June | Workshop Lighting by Phil Teague
◆ 8:00pm Guest Speaker – Portraiture
◆ AV Hand in |

thought provoking and heart rendering digital AVs and there was more!

All attendees, regardless of their level of expertise, are there for the same reason; to talk photography and meet and have fun with fellow minded photographers. Friends are easily made.

PSNZ Regional Conventions are also good value. Why not consider attending the Southern Regional at Greymouth from Friday 2nd to Sunday 4th October this year? After that there is next year's National which will be in Nelson from Wednesday 7th to Sunday 11th April 2010.

Frank Green APSNZ

Viewfinder is the official publication of the Christchurch Photographic Society
PO Box 1789
Christchurch Mail Centre
Christchurch 8140

Viewfinder is just one of the ways we spread the word about CPS. If you are interested in finding out more about CPS, you are welcome to attend our weekly meetings held on a

Wednesday night at 8:00pm at the Riccarton Community Church, 44 Elizabeth Street, Riccarton, Christchurch.
We hope you like the new look, any articles to:

labretto@paradise.net.nz
A complete list of Officers of CPS is available on the website but here are two important ones for you!
Diana Andrews
president@cpsnz.com

Iain Anderson
membership@cpsnz.com
For more information see our website: cpsnz.com
You can also download back issues of Viewfinder in PDF format from the website.

more PSNZ National Conference



above: Varying points of view in Wanganui's Sargeant Gallery by Carolyn Green.
below: Magnum photographer Trent Park entertaining members at the PSNZ National Convention



more Congratulations!

2009 NATEX

Congratulations to all those who received awards in the 2009

NATEX Competition:

John Barnes, Dianne Calvert, Carolyn Green, Witta Priester, Kevin Tyree, John Stewart, Scott Fowler, John Doogan, Georgie McKie Ron McKie and Ron Willems

PSNZ Honours

Associate

Ian Walls
John Doogan

Licentiate

Lynda Acton-Adams
Fergus Campbell
John Stewart
Jeffrey Mahn
Oswald Mungwazi
David Slaten

PSNZ Service Medal for Ron McKie



Congratulations to Ron McKie FPSNZ, ARPS who has been awarded a PSNZ Service Medal at the National Convention in Wanganui.

PSNZ service medals are awarded for outstanding service to photography, over a significant period.

Ron has previously served on the PSNZ Honours Board and is a current member of Christchurch Photographic Society where he is one of the most successful exhibitors. Within a short period of return to New Zealand after working in Papua New Guinea for sixteen years, he accepted an appointment to the position of Treasurer for the Photographic Society of New Zealand, and he has served in this role with distinction over the past four years.

Ron was in the forefront of developing a new database for the Society. This has been particularly helpful in facilitating sales of the 'New Zealand Camera' book.

On Ron's watch the Society has consistently turned in good financial performances and its funds are now in a very healthy state.

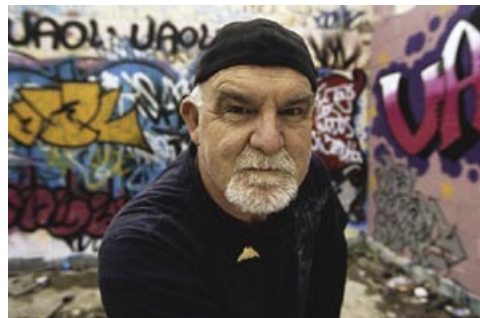
Congratulations to Anne and Pete Tyree our newest CPS newly weds who were married recently in Christchurch

CPS Wins Wiltshire Cup Projected Images

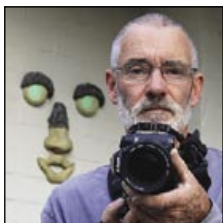


The Wiltshire Cup for Interclub Competition in projected images was won by CPS for 2009.

This cup was accepted on behalf of CPS by Georgie McKie FPSNZ (left) and presented by the Patron of PSNZ Yvonne Cave (right) at the recent National Convention.



clockwise from top left: In Your Face - Newell Grenfell Hon PSNZ FPSNZ FNPSNZ, Not Bluffing - Dave Slaten, Little Terns Feeding - Graame Guy FAPS EPSA, City Lights -Wayne Collins , Clowing Around, Stuart Clook, Anzac Remembered - Ron Willems FPSNZ ARPS AFIAP AAPS, The Warrior - Ron Parry APSNZ



Frank Green^{APSNZ}

Photographer, of sorts...

Now, what flattering lies can I tell about myself in a way which does not seem immodest?

I nearly joined CPS in the 1960's or thereabouts having been encouraged by Len Barnard in his New Regent Street shop. I thought I knew a bit about photography but was daunted by the fact that most members made their own prints. I didn't think I had time to do that.

In 1991 Newell Grenfell encouraged me to join and I am glad I did. I enjoy the club fellowship though am sometimes frustrated by the relatively limited scope of "club photography". That is not derogatory, there is nothing wrong with "pretty pictures" but I do wish many judges would open their minds more to messages within images.

Like Tony Bridge I re-invent myself from time to time; here is a present self inventory:

Strength: I am a "generalist" and like to know a little bit about a lot of things, so am fairly versatile.

Weakness: I am a "generalist" and like to know a little bit about a lot of things, so have not developed an individual style.

Present challenge: Deciding whether I need to work in an individual style – I enjoy what I do and might rather remain unpredictable.

Continuing challenge: Representing movement and depth in a static, two dimensional medium.

Greatest joy: Enjoying photography's challenges as the "most scientific of the arts, and the most artistic of the sciences.

Ambition: To leave a few images which people will enjoy because of their content, construction, message or whatever...

Favourite photographic companion: Carolyn – we have complementary skills and we work (and live) well together.

That's me, I hope there is some more to come!



Morning Mist by Rosemary Smart, Highly Commended 1st C Grade Comp. 2009

Local Photo Opportunities

2nd May	Autumn Racing Carnival
3rd May	Dog-a-Thon
3rd May	Steam Sunday at Ferrymead
10-17 May	Rockonnz Rock n Retro Festival
31st May	SBS Marathon
Every Friday	Music in the Square
Every Saturday	Lyttleton Farmers Market

For times etc go to www.bethere.co.nz

Laurie Thomas Winter School

Fri 24th to Sun 26th July 2009

Flock Hill, West Coast Road, State Highway

Tutor: Sally Mason

Registrations close 27th May 2009

Members from Ballot selection will be notified by mid June 2009

Registration form available online 1st May

Please go to the CPS website for more information.

Matt's CHAT

Matt has been so busy at work helping customers he ran out of time to produce an article this month. For personal advice, pop in and see him and the rest of the team at Photo and Video for the latest news and products.

Remember to take your CPS membership card in when shopping at Photo & Video to take advantage of their "friend of the store" pricing.

photo & video
INTERNATIONAL

PHOTO & VIDEO INTERNATIONAL
1000 GARDEN
WWW.PHOTO.CO.NZ

quickNOTE

Thank you

To all the members who help out behind the scenes, you know who you are! If you would like to help in any areas please email: Carolyn@fusiontrust.co.nz

Other interesting websites

www.grguy.net
www.thistonybridge.com
www.andrisapse.com
www.colinprior.co.uk

Online Publications

www.grinz.co.nz
www.apogeephoto.com
www.luminous-landscape.com

Photography Courses

Continuing Education – University of Canterbury
Winter Light Workshop July 25-30th at Wedderburn
www.thistonybridge.com
www.adobeeseminars.co.au