



Lake Pukaki, Doc Ross

## Doc Ross – Gallery464

### Our guest speaker at CPS on Wednesday 3rd June at 8pm.

Doc was born in Eketahuna, New Zealand in 1955 and is a self-taught photographer. Since 1998 he has operated Gallery464 at 464 Colombo Street. (It is well worth visiting!)

Doc has travelled extensively through the Middle East, Europe, China and Australia. He has had articles published in the NZ Journal of Photography, Australian Photography, Photographers Mail, The Press, and was featured in the prestigious USA photography collectors' magazine 'B&W'.

Doc has had exhibitions in COCA, Christchurch; Gallery Oceanic, Queenstown; Anita Traverso gallery, Melbourne;

A.C.E gallery, Sydney and had images included in photography from Australia and New Zealand at Sotheby's, New York.

Currently he is part of an international touring exhibition from Germany now showing in Morocco with works from 12 artists from 12 countries titled "Globalization-Connections-Time".

He is an original and inventive photographer who has much to interest us in the processes he uses and the unusual sources of some of his fine art photography. Do not miss him!

*Frank Green APSNZ*

## upComing...

Don't let the rain dampen your photographic spirits. Get out there (with a raincoat on) and photograph! These CPS events happen this month:

Wed 3rd June	Workshop Flash Lighting by Phil Teague ◆ 8:00pm Guest Speaker Doc Ross (see main article to left) ◆ AV hand in
Sat 7th June	Field Trip Lake Pearson
Wed 10 June	8pm Set Subject 'Blue' competition judged by John Boyd APSNZ ◆ Laurie Thomas New Zealand Landscape Salon hand in
Wed 17th June	7:15 Workshop follow up – Flash Lighting by Phil Teague ◆ 8pm 4th PI Competition judged by Don Boyd ◆ Photojournalism hand in
Fri 19th June	7:30pm Mid Winter Dinner at Trevinos on Riccarton Rd
Wed 24th June	7:15pm Critique and Feedback ◆ 8pm 4th Open Print competition judged by Adam Buckle FPSNZ, ANZIPP

## Mid Winter Dinner at Trevinos, Riccarton Rd

A social evening for members to get to know one another, talk photography and enjoy some great food. Partners welcome. Friday 19th June. Main meals from \$25 [www.trevinos.co.nz](http://www.trevinos.co.nz)

Contact Iain Anderson to book your seat: [ChchPhotoSociety@clear.net.nz](mailto:ChchPhotoSociety@clear.net.nz) or telephone 0-3-352-3352

## 2009 NATEX Competition Success

John Barnes, Dianne Calvert, Carolyn Green, Witta Priester, Kevin Tyree, John Stewart, Scott Fowler, John Doogan, Georgie McKie, Ron McKie, Ron Willems, Annette Preen and Graeme Guy

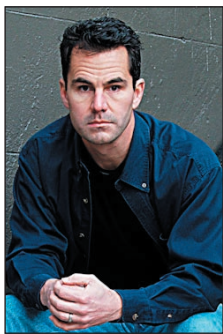
Viewfinder is the official publication of the Christchurch Photographic Society  
PO Box 1789  
Christchurch Mail Centre  
Christchurch 8140

Viewfinder is just one of the ways we spread the word about CPS. If you are interested in finding out more about CPS, you are welcome to attend our weekly meetings held on a

Wednesday night at 8:00pm at the Riccarton Community Church, 44 Elizabeth Street, Riccarton, Christchurch.  
We hope you like the new look, any articles to:

[labretto@paradise.net.nz](mailto:labretto@paradise.net.nz)  
A complete list of Officers of CPS is available on the website but here are two important ones for you!  
*Diana Andrews*  
[president@cpsnz.com](mailto:president@cpsnz.com)

*Iain Anderson*  
[membership@cpsnz.com](mailto:membership@cpsnz.com)  
For more information see our website: [cpsnz.com](http://cpsnz.com)  
You can also download back issues of Viewfinder in PDF format from the website.



Dave Slaten by Nola Sumner

## Dave Slaten

My hobby began in 2003 the week before I moved to New Zealand from Dallas, Texas when I sold my car for \$1000 and bought a digital camera for \$1100. Landscapes and travel shots piqued my interest to improve my photography.

Since I was encouraged to join CPS by Bruce Jensen in 2007, I have found competitions motivating, judging educational and the camaraderie inspiring. I have enjoyed trying new things and finding my own style with the support of friends who share the same hobby, but see a different world through their viewfinders.

The best lesson: there is no substitute for making photos and trying new things. Experience is the only way forward. Look to CPS for support, not answers.

## Lake Pearson Field Trip

Field Trip June 7th 2009

This trip is to Lake Pearson and is NOT a 4WD trip.

Meet at Lake Pearson at 7.30am for sunrise and POSSIBLE hoar frost.

At about 9.30 – 10.00am we will move on to the Lake Sarah area, then on over the Mt White Bridge.

This trip is subject to weather and road conditions, particularly the road over Porters Pass.

Allow about 1 1/2 to 2 hours driving time from Christchurch to Lake Pearson.

Bring lots of warm gear, hot drinks, food, and even cameras and tripods.

Any further information or to organise to car-pool contact Chris (Ulysses)

Newman on 0-3-388 7147.

### Local Photo Exhibitions

Photographic display 'Up Close and Personal' at Botanic Gardens Info Centre, May 3 – Oct 31st

Photography Exhibition: Infinity at The Arts Centre, June 2 – 22nd

Urban Traces ~ blink time. An exhibition by Mary Jo Bedford, Quiqcorp Gallery 155 High St, June 3rd – July 1st

### Local Photo Opportunities

Lyttelton Harbour Festival of Lights 2009 Street Festival on Friday June 12th from 5:30pm

Steam Sunday at Ferrymead Heritage Park, June 7th, 10am – 4:30pm

For times etc go to [www.bethere.co.nz](http://www.bethere.co.nz)

### quickNOTE

#### Thank you

To all the members who help out behind the scenes, you know who you are! If you would like to help in any areas please email: [Carolyn@fusiontrust.co.nz](mailto:Carolyn@fusiontrust.co.nz)

#### 100% Pure Open Slide Salon

CPS has taken on the responsibility of judging and running the 100% Pure Open Slide Salon for Southland PS.

Entry forms can be obtained on-line from the Southland PS site in the PSNZ Members section. It closes on 30th June.

Slide workers...this is one for you. Please support it

## Matt's CHAT

Matt is back with an interesting article and encouragement to get out there capturing images!

With so many of you heading out to make the most of those gloriously rich autumn colours, we've noticed a resurgence of interest in small lightweight tripods and the almost indispensable graduated filter. A good thing given us Kiwis' affinity for humping vast amounts of kit into the great outdoors in search of the elusive perfect landscape shot (please let me know if you find it as I'm still looking).

Thankfully those clever engineering types have been hard at work coming up with new ways for us to hold our cameras steady without resorting to lugging that tripod you've been using since the seventies, you know the one that has kept your chiropractor in Mediterranean holidays for the past 3 decades.

Velbon has come up with some quick to set up travel options while Jobo have a model aptly called the gorillapod which can be set-up on almost anything and also doubles as a solid morning's entertainment for the kids in the school holidays.

For those of you with an eye for precision engineering both Benro and Manfrotto have some very clever and versatile models including a series of exotic carbon fibre ones which will help justify that unused set of expensive digital bathroom scales we all thought would help save some grams on our organic, bipedal support systems.

If you're not already using one, investing in a set of graduated filters will definitely help cope with the huge contrast between the sky and foreground when shooting landscapes.

The most popular system comes from a French company named Cokin who make them in a variety of strengths, colours and differing transitions. Being rectangular in shape allows you to slide them up and down in a dedicated holder on the front of your lens positioning the transition from dark to light point at the desired horizon line. The point of all being to save you lots of time in photoshop afterwards trying to recover lost detail in your shadows and or highlights. Handy.

And just remember as we approach the colder months getting off the couch is 90% of the effort required to take great photos, so get out there and do it.

For personal photographic advice, pop in and see him and the rest of the team at Photo and Video for the latest news and products.

Remember to take your CPS membership card in when shopping at Photo & Video to take advantage of their "friend of the store" pricing.

photo & video  
INTERNATIONAL

Merivale Mall, Christchurch www.photo.co.nz  
0800 CAMERA